

# The Next Generation of Atlas User Interfaces – A User Study with “Digital Natives”

Raimund Schnürer, René Sieber, Arzu Çöltekin

ETH Zurich, University of Zurich

This presentation is co-financed by the European Social Fund and the state budget of the Czech Republic.



european  
social fund in the  
czech republic



EUROPEAN UNION



MINISTRY OF EDUCATION,  
YOUTH AND SPORTS



OP Education  
for Competitiveness

INVESTMENTS IN EDUCATION DEVELOPMENT

# Motivation

Attract a younger audience with our atlas

**WANTED**  
**DIGITAL NATIVES**

- ❖ **BORN IN 1980 OR LATER**
- ❖ **FAMILIAR WITH DIGITAL DEVICES**
- ❖ **POSSESS DIFFERENT THINKING AND ACTING PATTERNS**

[PRENSKY 2001]



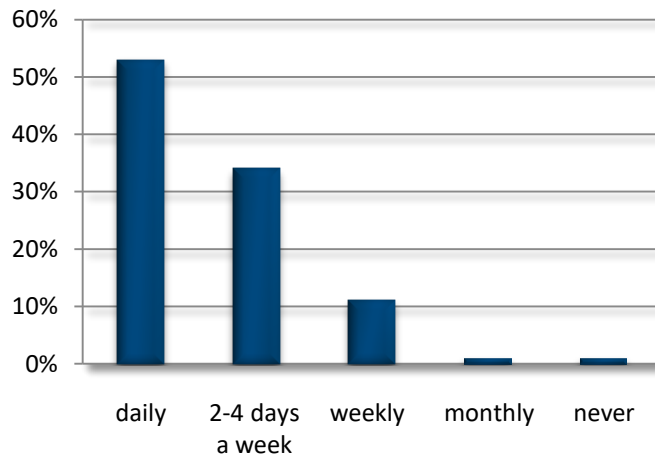
<http://texassuccess.org/wp-content/uploads/2012/07/white-boy-laptop.jpg>  
<http://118156117ze14agfo2d077b04g.wpengine.netdna-cdn.com/wp-content/uploads/tablet-kid4.jpeg>  
[http://www.mmn.com/sites/default/files/editorial/shutterstock\\_115123381.jpg](http://www.mmn.com/sites/default/files/editorial/shutterstock_115123381.jpg)  
<http://www.samsunib.com/global/article/consumer-images/article/2012/09/18/Kids-0.JPG>



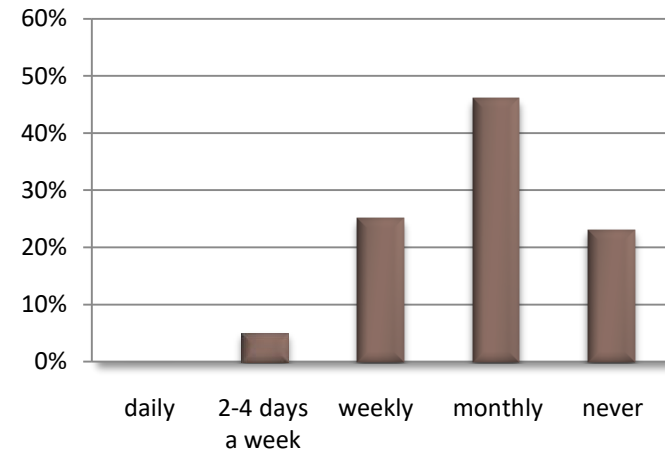
# Test participants

- ▶ 110 students (61 female, 49 male) from secondary schools in Switzerland
- ▶ 14-15 years old

Computer/Tablet usage



Map usage

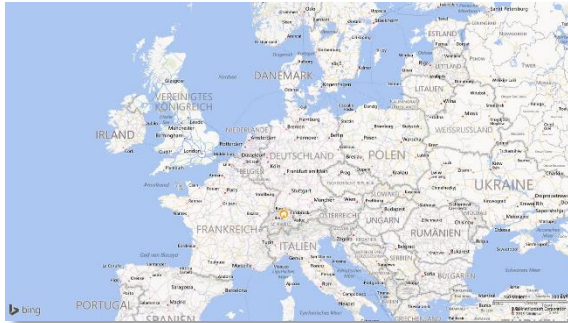


# Test procedure

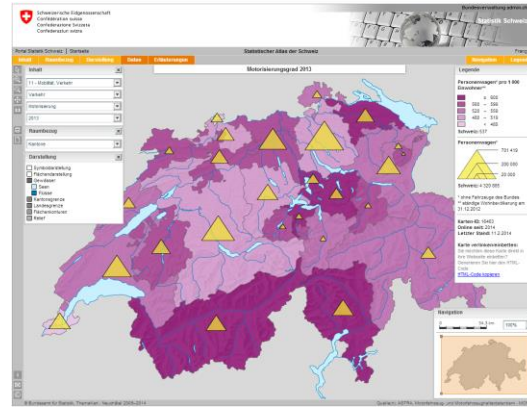
- ▶ Online survey (SelectSurvey.NET)
- ▶ Computer lab
- ▶ 5 Atlas GUI layouts varying in layout density and tool arrangement
- ▶ 5 typical use cases for atlases
- ▶ Mouse click coordinates captured (max. 10 clicks per task)
- ▶ Times captured (max. 20 seconds per task)
- ▶ Overall rating of the five layouts (attractiveness, usability)



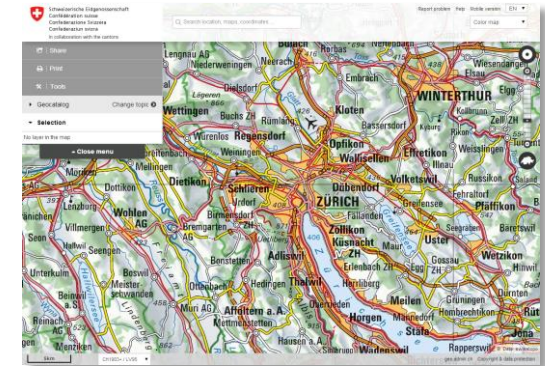
# Atlas GUI Layouts



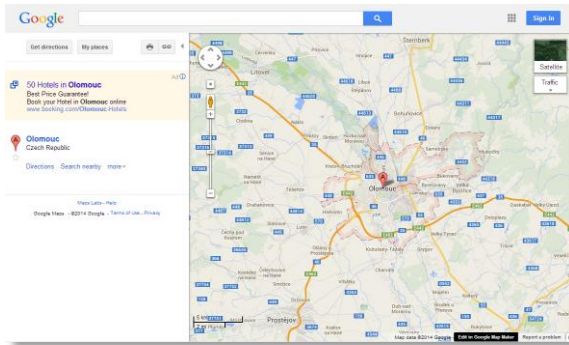
Minimalistic style



Desktop style



Tablet style

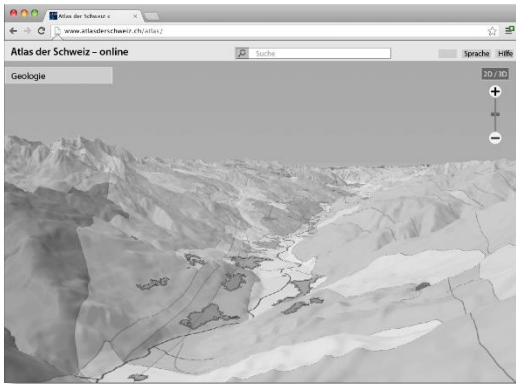


Google Maps style

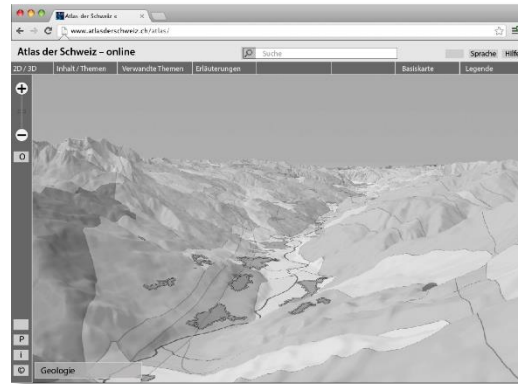


YouTube style

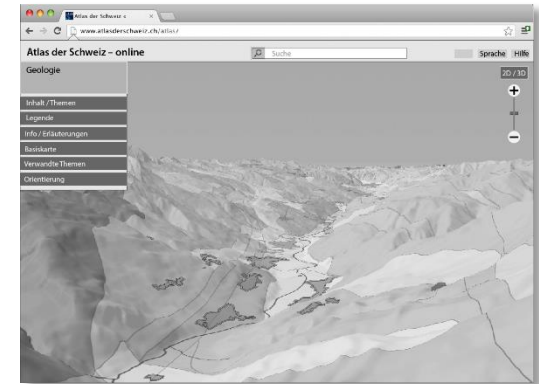
# Atlas GUI Layouts



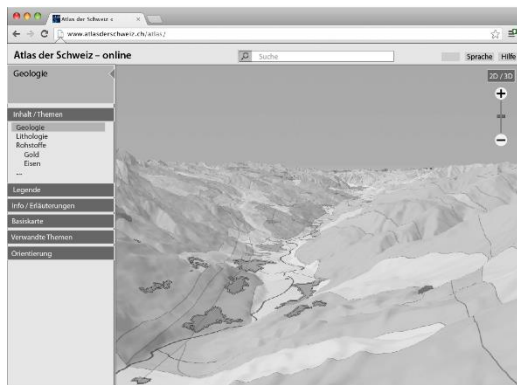
Minimalistic style



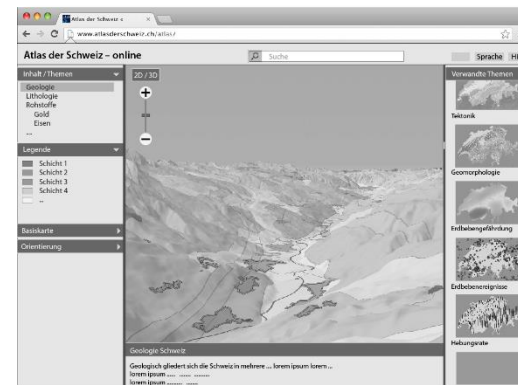
Desktop style



Tablet style



Google Maps style



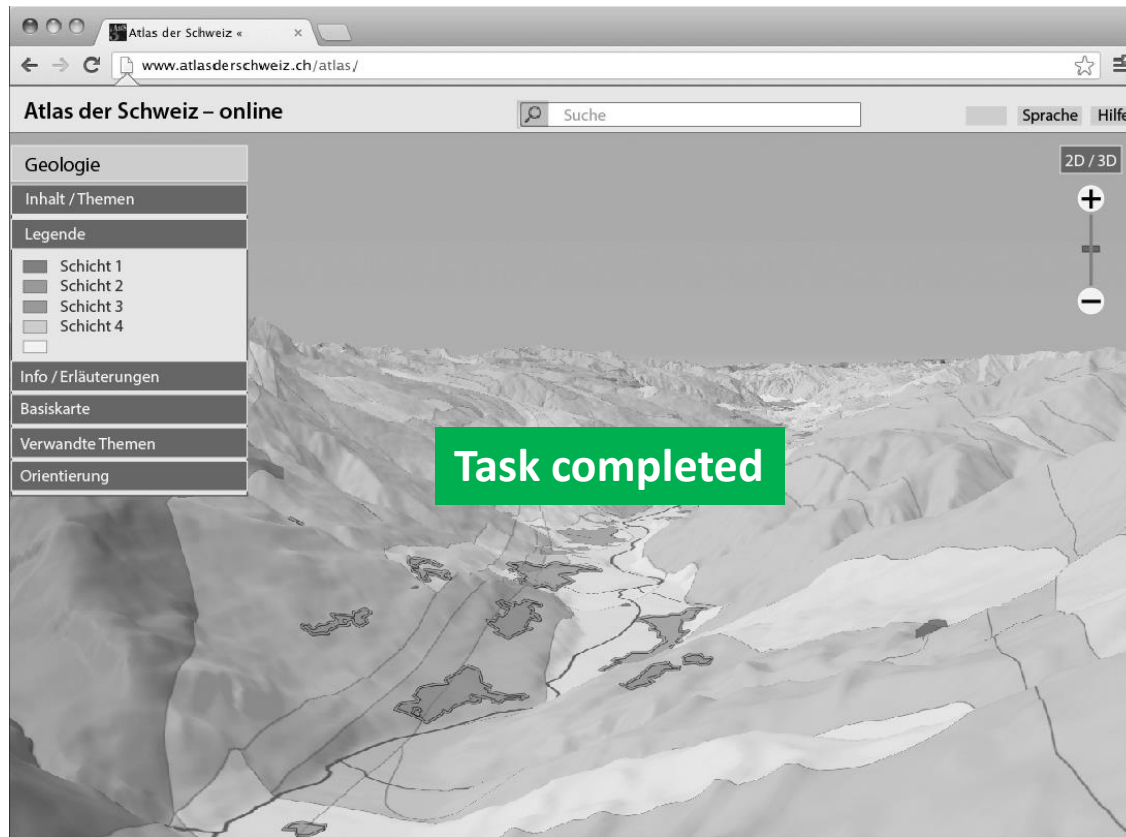
YouTube style

# Tasks

- 1) **Change theme:** Switch from “Geology” to “Raw materials”
- 2) **Find legend:** Resolve the meaning of map colors and symbols in the map
- 3) **Map query:** Determine the name of the settlement and the underlying geological structure in the center of the map
- 4) **Map info:** Access additional media (e.g. text, images)
- 5) **Spatial orientation:** Find out where the displayed map region is located within Switzerland

# Example

## Find the legend





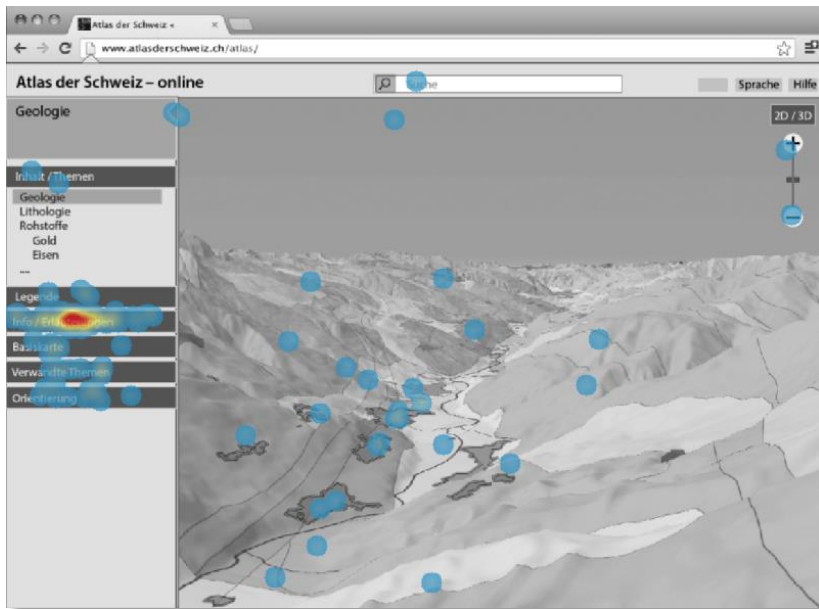
# Results

## Performance metrics (effectiveness and efficiency)

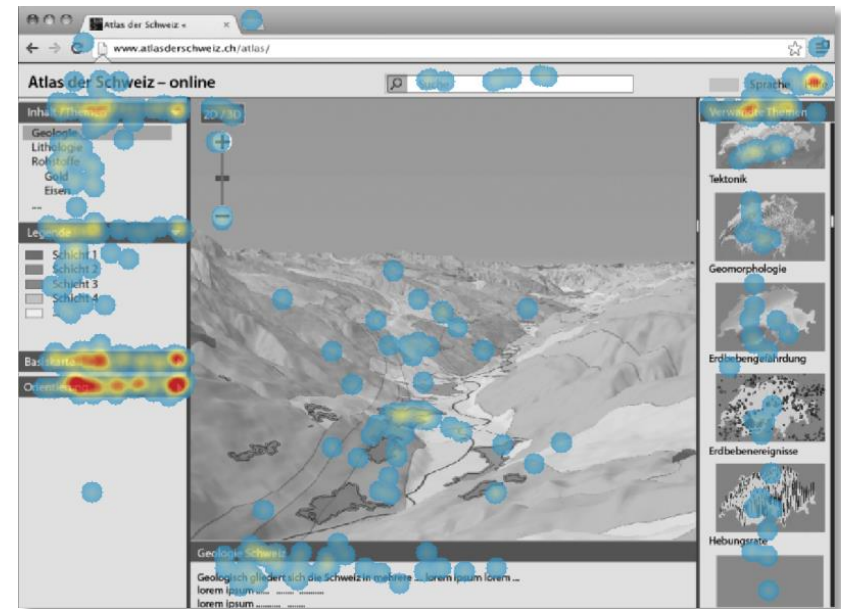
	Successfully completed tasks	Average time spent on a task	Normalized number of mouse clicks for a task
<b>Minimalistic style</b>	66%	8.93s	2.51
<b>Desktop style</b>	72%	9.21s	3.31
<b>Tablet style</b>	90%	5.37s	1.85
<b>Google Maps style</b>	93%	4.52s	1.87
<b>YouTube style</b>	78%	7.87s	2.53

# Results

Access additional map information (e.g. text, images)



Google Maps style



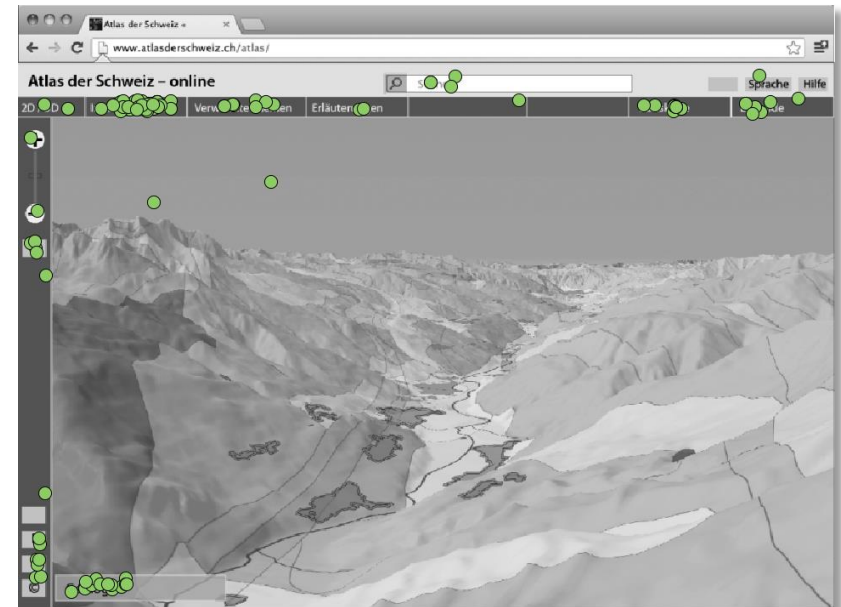
YouTube style

# Results

Switch the theme from “Geology” to “Raw materials”



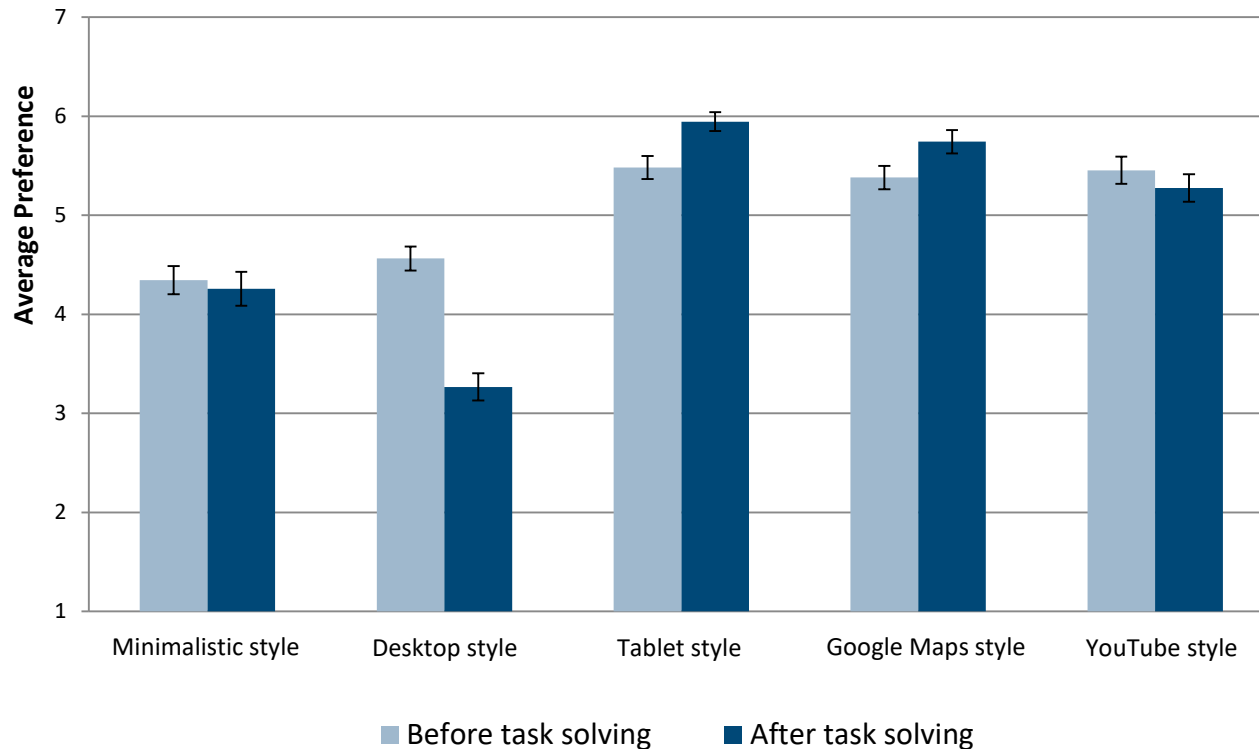
First clicks



Following clicks

# Results

## Overall attractiveness and usability rating



# Conclusions

---

- ▶ Atlas GUIs with a large map panel and a slim interface are not preferred by Digital Natives
- ▶ Digital Natives performed significantly better in Atlas GUIs with a medium tool density

## Recommendations:

- ▶ Functions/Tools should be grouped, not distributed
- ▶ GUI elements should be tested for ambiguity
- ▶ The use and effect of a tool should be easily recognizable

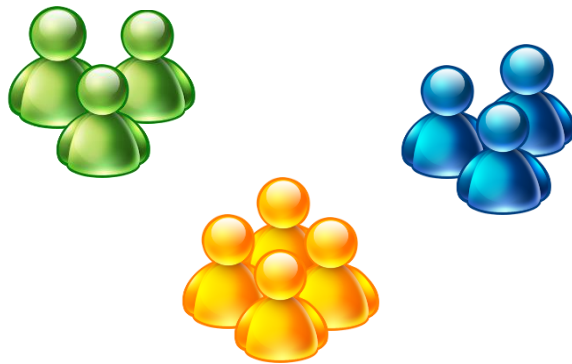
# Outlook



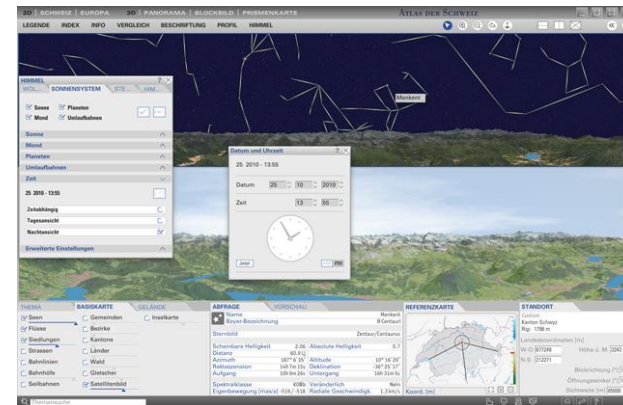
Silver Surfers



Tablets



Inter-subject tests



More complex tasks and more realistic interfaces

<http://www.iconhot.com/icon/png/brush-intense-messenger/256/buddy-bleu.png>  
<http://files.softicons.com/download/application-icons/messenger-icons-by-tatice/png/256/En%20jme.png>  
[http://png-4.findicons.com/files/icons/2279/brush\\_intense\\_messenger/256/msn\\_mobile.png](http://png-4.findicons.com/files/icons/2279/brush_intense_messenger/256/msn_mobile.png)  
<http://memoryareaaz.com/area/wp-content/uploads/2010/11/Grandfather-on-computer.jpg>

# Thank you for your attention!

Raimund Schnürer  
schnuerer@karto.baug.ethz.ch

Institute of Cartography and  
Geoinformation, ETH Zurich